

DEVICES THIS PAGE

Type IIIs: 40
Signs: 8
Volunteers: 5



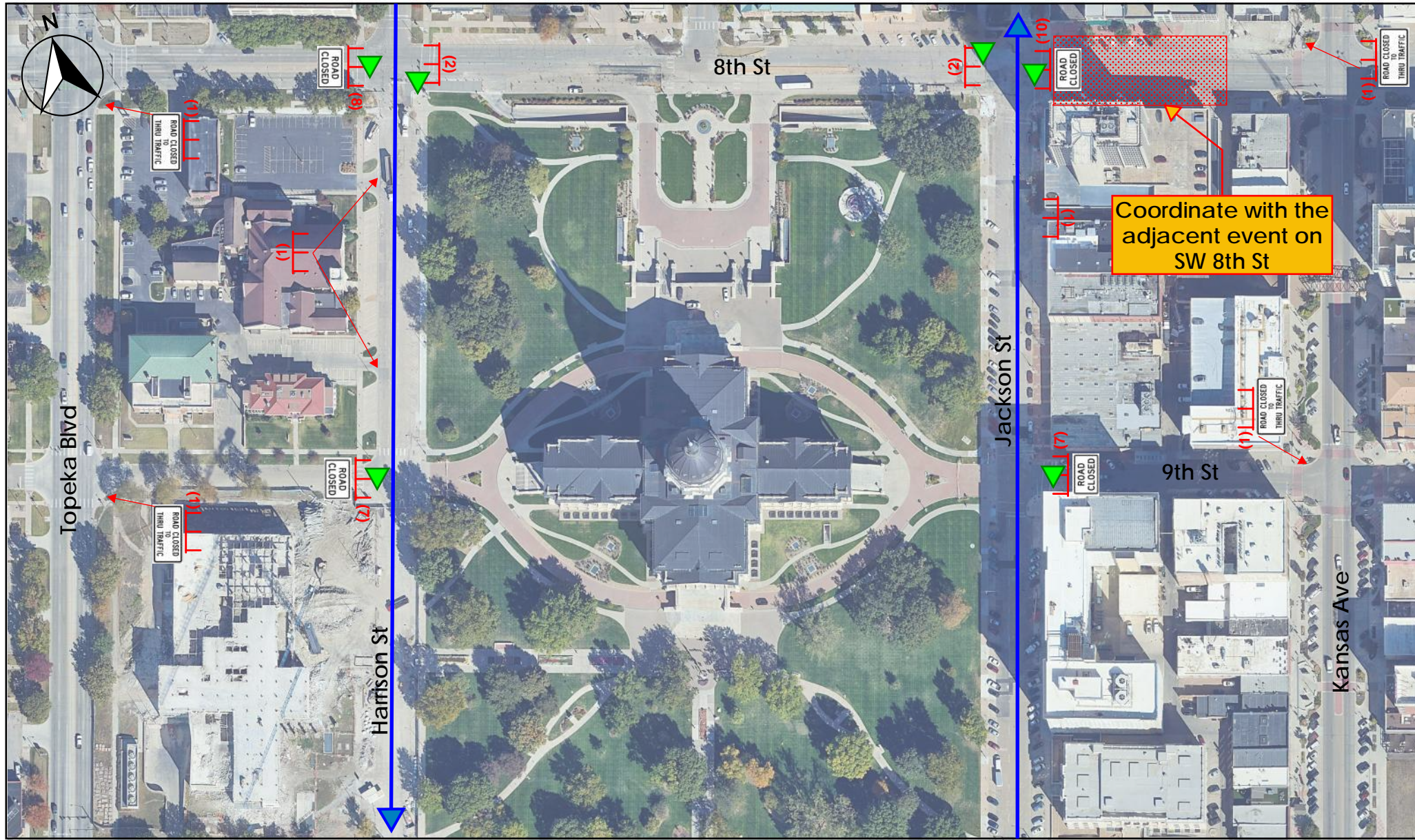
Route



Type III Barricades
(# of barricades)



Traffic Control
Volunteer



DEVICES THIS PAGE

Type IIIs: 43
Signs: 8
Volunteers: 6



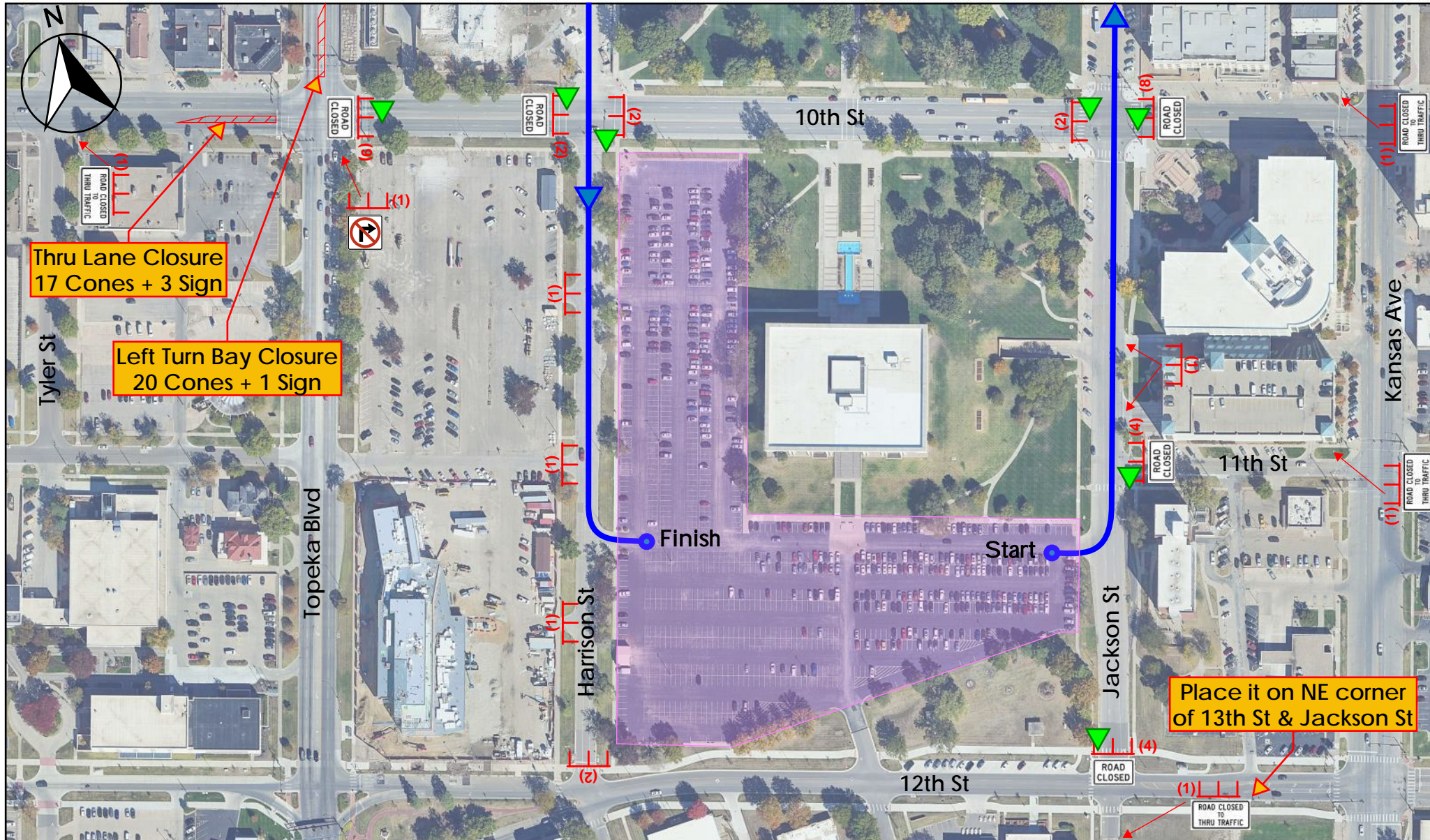
Route



Type III Barricades
(# of barricades)



Traffic Control
Volunteer



DEVICES THIS PAGE

Type III's: 42
Signs: 14
Cones: 37
Volunteers: 7



Route



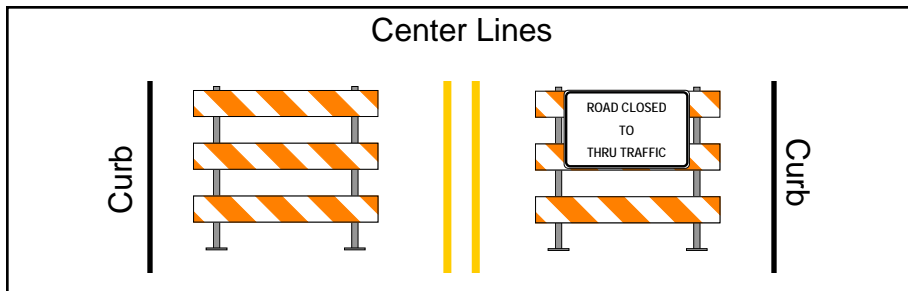
Type III Barricades
(# of barricades)



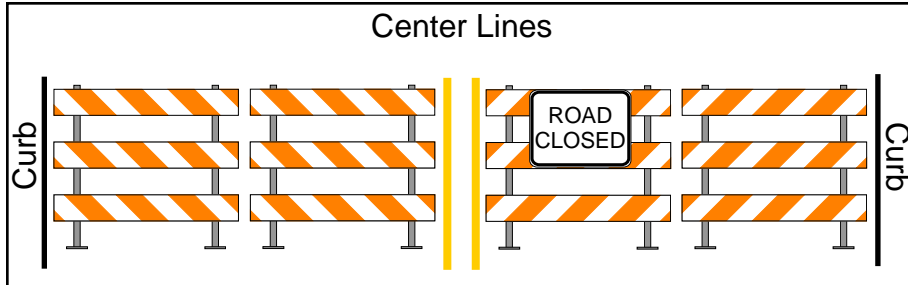
Traffic Control
Volunteer



Lane Closure
(See Page 6)

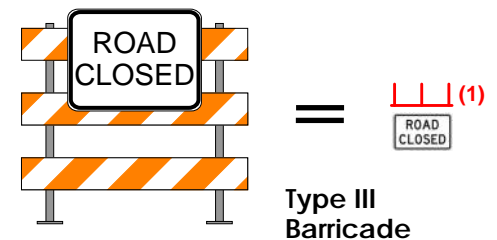
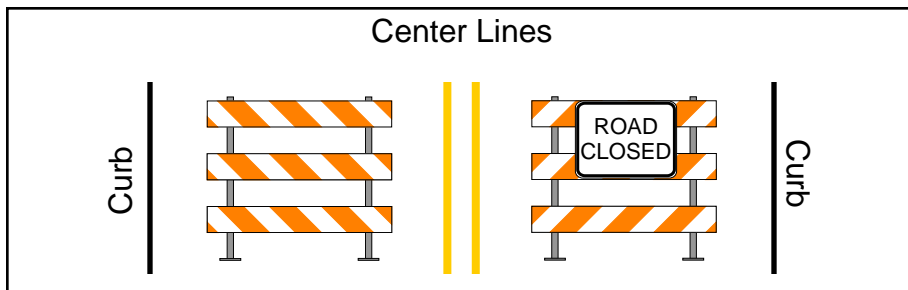


Place these first, like so, facing oncoming traffic.



Then pull closures into place, facing oncoming traffic.

Note: A sufficient number of barricades shall be installed to fully close the roadway from curb to curb.



Each Barricades requires at least 2 sand bags

Fire lanes to be maintained in accordance with Fire Department recommendations

Total Devices

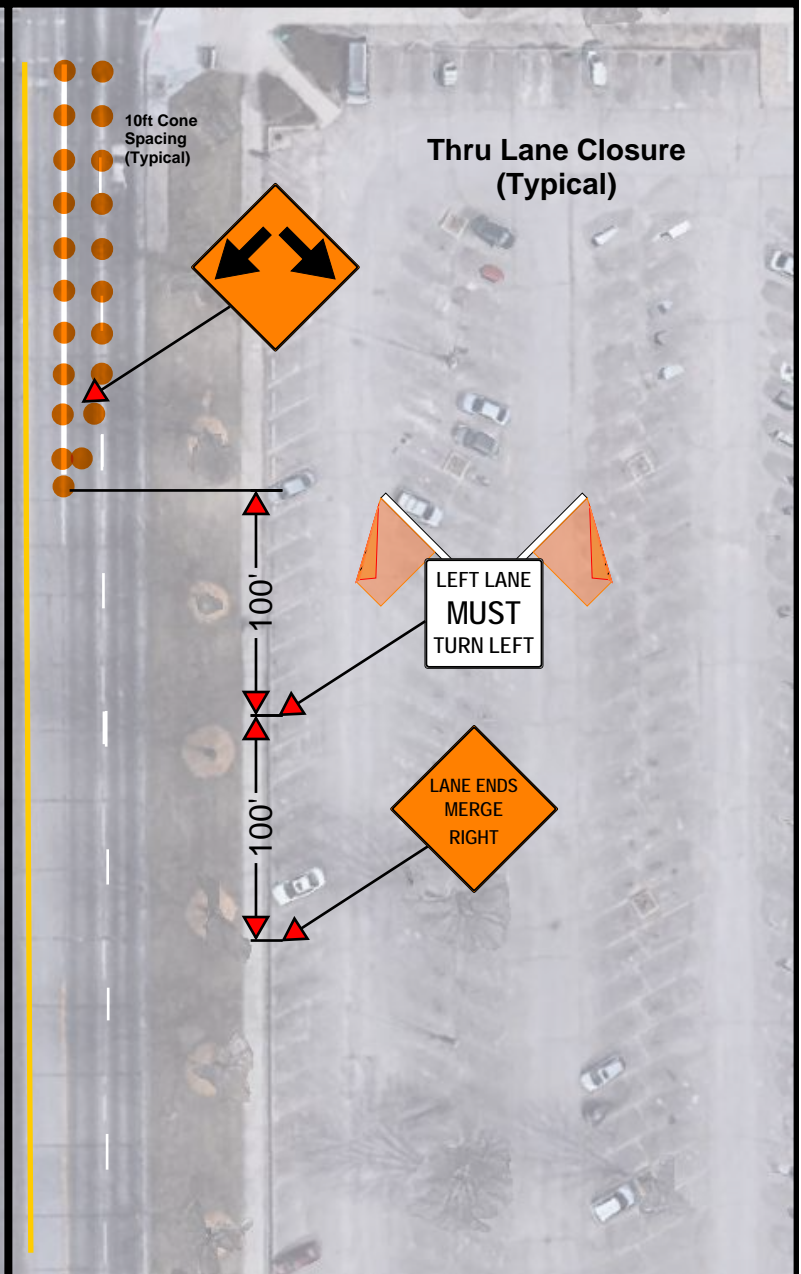
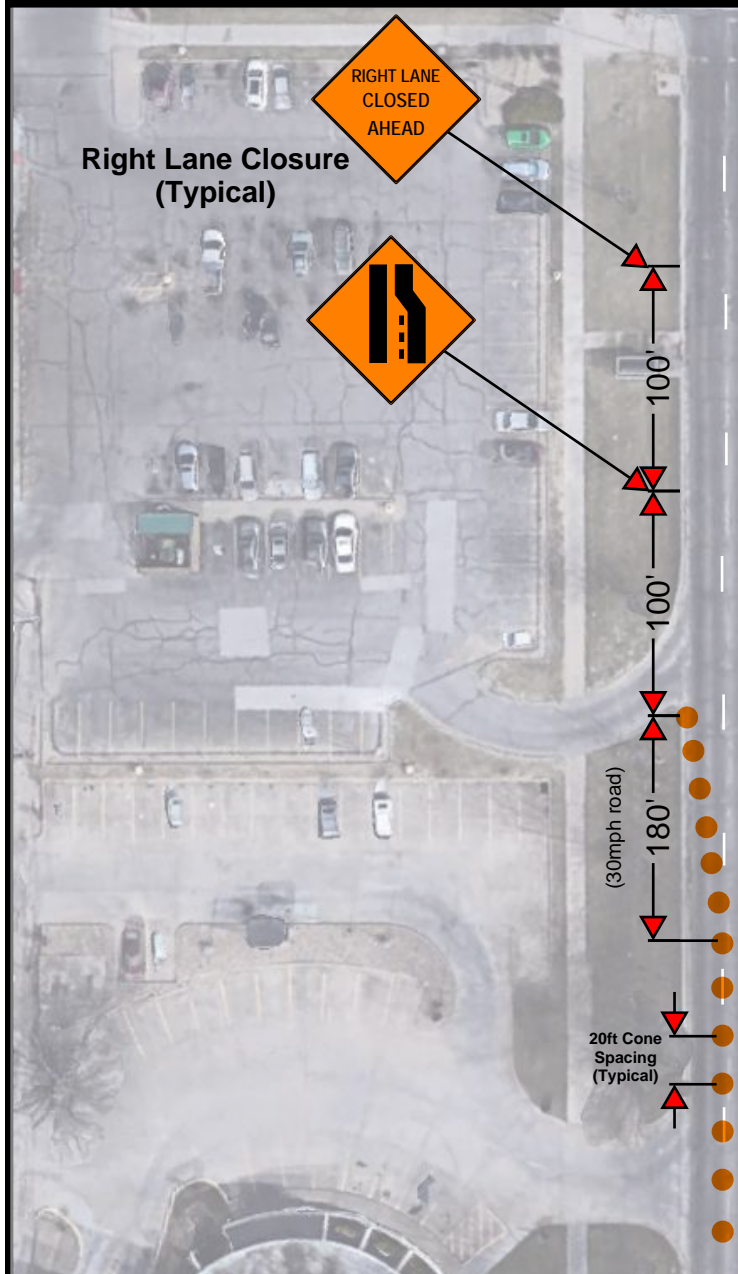
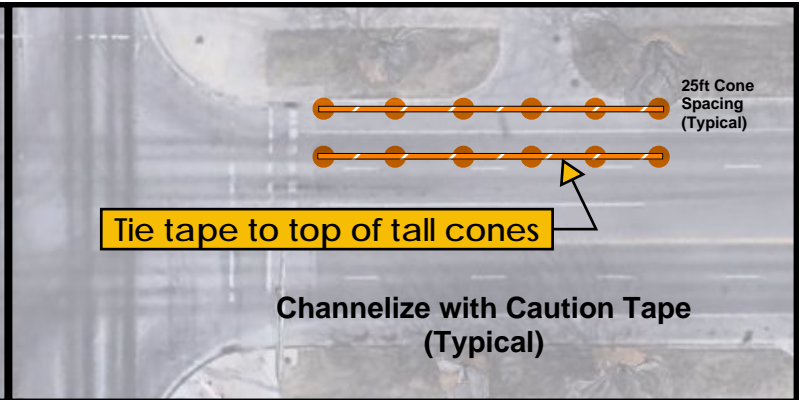
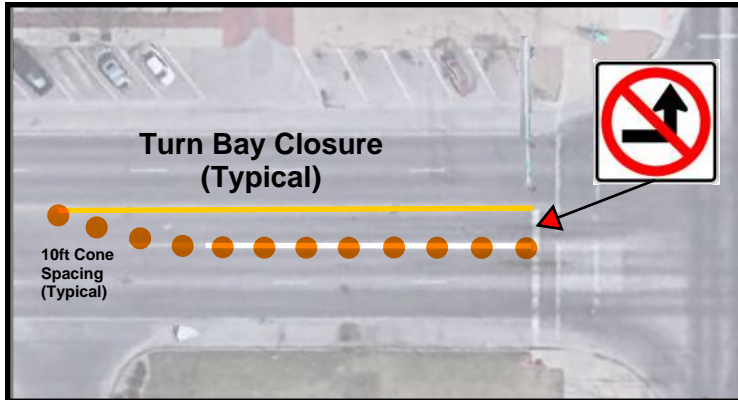
Barricades: 125
Signs: 30
Cones: 37
Volunteers: 18
Vests: 18

Traffic Control Company Contact Numbers:

C-HAWKK – 1-785-542-1800
MATHER – 1-785-478-3780
TCS – 1-785-448-0402
CTCR – 1-785-232-8360

Volunteers must wear Class 2 ANSI vests at all times while in the roadway.

ALL APPLICANTS SHALL CONTACT A TRAFFIC CONTROL COMPANY FOR ALL TRAFFIC CONTROL DEVICES, **APPLICANT SHALL HAVE THE COMPANY CONTACT TRAFFIC ENGINEERING AT LEAST 3 DAYS PRIOR TO EVENT AND CONFIRM ORDER HAS BEEN PLACED.** IF YOU ARE SUPPLYING YOUR OWN BARRICADES YOU SHALL SEND THE NCHRP 350 OR MASH COMPLIANT CERTIFICATE TO CITY OF TOPEKA TRAFFIC ENGINEERING WITH A PHOTO OF THE DEVICES NO LATER THAN 10 DAYS PRIOR TO YOUR EVENT. **FAILURE TO ORDER OR USE UNAPPROVED TRAFFIC CONTROL WILL RESULT IN EVENT CANCELLATION.**



Volunteer Info



Volunteers are required to...

- ~ Stay at their assigned closure.
- ~ Help emergency personnel or authorized vehicles through closures.
- ~ Wear a vest at all times while in the roadway.
- ~ Be at least 18 years old.
- ~ Set up and tear down traffic control.



Race & Marathon Instructions



Volunteer wearing safety vest stands at the right edge of the road at each approach to the race route.

- * As drivers stop, inform them of the race in progress.
- * Request that they wait if there is not a gap in the race to allow them to cross the road.
- * Request that drivers do not drive on the race route.

Place Cone + Sign in the center of the road at each approach to the race route.

